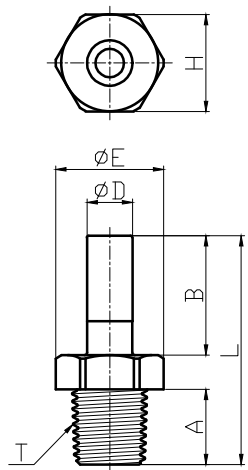


HCJ



MODEL (mm)	ϕ D	T (BSPT, R)	A	B	ϕ E	H (HEX)	L	WEIGHT (g)	EA (BOX)
HCJ 04R01	04	1/8	9.1	18.0	14.4	13.0	33.1	1.8	100
HCJ 04R02		1/4	13.1		18.5	17.0	37.1	3.5	100
HCJ 06R01	06	1/8	9.1	19.5	14.4	13.0	34.6	2.0	100
HCJ 06R02		1/4	13.1		18.5	17.0	38.6	3.7	100
HCJ 08R01	08	1/8	9.1	21.0	14.4	13.0	36.1	2.2	100
HCJ 08R02		1/4	13.1		18.5	17.0	40.1	3.8	50
HCJ 08R03		3/8	13.5		23.0	21.0	40.5	5.3	50
HCJ 10R02	10	1/4	13.1	24.0	18.5	17.0	43.1	4.5	50
HCJ 10R03		3/8	13.5		23.0	21.0	44.0	6.1	50
HCJ 10R04		1/2	16.5		26.5	24.0	47.0	9.7	25
HCJ 12R03	12	3/8	13.5	28.0	23.0	21.0	48.0	6.8	50
HCJ 12R04		1/2	16.5		26.5	24.0	51.0	10.2	25