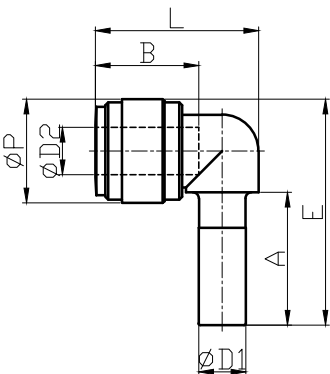


# HLJ



MODEL (mm)	$\phi D1$	$\phi D2$	$\phi P$	A	B (TUBE DEEP)	E	L	WEIGHT (g)	EA (BOX)
HLJ 0404	04	04	13.2	18.0	14.7	30.1	21.9	2.5	100
HLJ 0606	06	06	15.5	21.0	16.1	34.8	25.1	3.7	100
HLJ 0608	06	08	17.6	21.0	17.5	36.8	26.0	4.7	100
HLJ 0808	08	08	17.6	22.5	17.5	38.3	27.7	5.3	50
HLJ 1006	10	06	20.0	24.8	16.1	43.2	30.6	7.8	50
HLJ 1008	10	08	20.0	24.8	17.5	43.2	31.0	8.2	50
HLJ 1010	10	10	20.0	24.8	20.1	43.2	31.3	7.4	50
HLJ 1212	12	12	23.6	29.5	24.7	51.2	39.0	12.6	25