

-20°C ÷ 100°C with o-ring in NBR
 -15°C ÷ 200°C with o-ring in Viton
 The working temperature depends on the features of the tube used.



Working pressure:
 18 Bar
 The working temperature depends on the features of the tube used.



Compressed air, water, oil and fluids suitable with construction materials



- Taper gas BSPT ISO 7 from R1/8" to R1/2"
 - Parallel gas BSPP ISO 228 from G1/8" to G1/2"
 - Metric ISO 262 M5, M6 and M12



Polyurethane, polyethylene, polyamide, PTFE, FEP

Body: Nickel-plated brass
 Turning: UNI EN 12164 CW 614N
 Hot forging & machining:
 UNI EN 12165 CW 617N
Lock nut: Nickel-plated brass
 UNI EN 12164 CW 614N
O-ring: NBR 70



AVAILABILITY:

- Available on request and with a minimum yellow brass quantity
- Available on request with o-ring in viton

SILICONE FREE

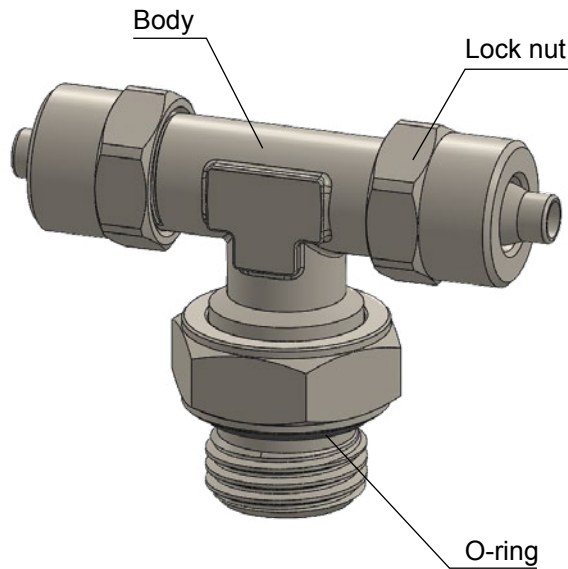


Products in compliance with EC Regulation 1907/2006



Products in compliance with the directive EU 2015/863

CONSTRUCTION DETAILS



TIGHTENING TORQUE
 TAPER GAS BSPT ISO 7

THREAD	1/8"	1/4"	3/8"	1/2"
Nm	8	12	14	16

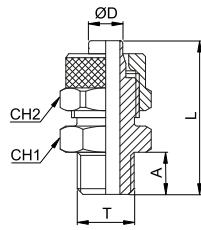
TIGHTENING TORQUE
 PARALLEL GAS BSPP ISO 228 & METRIC ISO 262

THREAD	M5x0,8	M6x1	1/8"	1/4"	3/8"	1/2"
Nm	0,8	0,8	1,2	1,5	2,5	3,5



2500

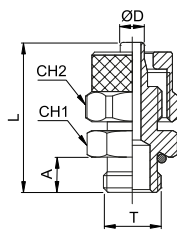
Male connector BSPP thread



CODE	ØD	T	A	L	CH1	CH2	g
2500TR1853	5/3	G 1/8"	6	23,0	14	8	10,0
2500TR1864	6/4	G 1/8"	6	25,5	14	12	16,0
2500TR1464		G 1/4"	8	28,0	17	12	24,0
2500TR3864	8/6	G 3/8"	9	29,0	19	12	28,0
2500TR1886		G 1/8"	6	25,5	14	14	18,0
2500TR1486	10/8	G 1/4"	8	28,0	17	14	26,0
2500TR3886		G 3/8"	9	29,0	19	14	28,0
2500TR18108	12/10	G 1/8"	6	27,5	14	16	24,0
2500TR14108		G 1/4"	8	29,5	17	16	30,0
2500TR38108		G 3/8"	9	30,5	19	16	34,0
2500TR12108	15/12,5	G 1/2"	10	32,0	24	16	44,0
2500TR381210		G 3/8"	9	32,0	19	18	38,0
2500TR121210	15/12,5	G 1/2"	10	33,5	24	18	48,0
2500TR1215125		G 1/2"	10	33,5	24	22	60,0

2502

Male connector BSPP thread with o-ring

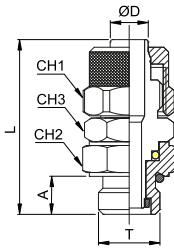


CODE	ØD	T	A	L	CH1	CH2	g
2502TR18427	4/2,7	G 1/8"	6	21,8	13	8	10,0
2502TR1853	5/3	G 1/8"	6	23,0	13	8	11,0
2502TR1864	6/4	G 1/8"	6	25,5	13	12	16,0
2502TR1464		G 1/4"	8	28,0	16	12	21,0
2502TR3864	8/6	G 3/8"	9	29,0	19	12	26,0
2502TR1264		G 1/2"	10	30,5	24	12	45,0
2502TR1886	10/8	G 1/8"	6	26,0	14	14	18,0
2502TR1486		G 1/4"	8	28,0	16	14	22,0
2502TR3886		G 3/8"	9	29,0	19	14	31,0
2502TR1286	12/10	G 1/2"	10	30,5	24	14	38,0
2502TR18108		G 1/8"	6	28,0	14	16	24,0
2502TR14108	15/12,5	G 1/4"	8	29,5	16	16	28,0
2502TR38108		G 3/8"	9	30,5	19	16	32,0
2502TR12108	15/12,5	G 1/2"	10	32,0	24	16	51,0
2502TR381210		G 3/8"	9	32,0	19	18	36,0
2502TR121210	15/12,5	G 1/2"	10	33,5	24	18	46,0
2502TR1215125		G 1/2"	10	35,5	24	22	52,0



2503

Swivel male connector BSPP thread with o-ring

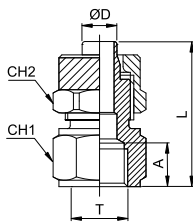


CODE	ØD	T	A	L	CH1	CH2	CH3	g
2503TR1864	6/4	G 1/8"	6	36,0	12	13	12	24,0
2503TR1464		G 1/4"	8	37,5	12	16	14	30,0
* 2503TR1885	8/5	G 1/8"	6	36,0	14	13	12	26,0
* 2503TR1485		G 1/4"	8	37,5	14	16	14	32,0
2503TR1886	8/6	G 1/8"	6	36,0	14	13	12	26,0
2503TR1486		G 1/4"	8	37,5	14	16	14	32,0
* 2503TR141065	10/6,5	G 1/4"	8	39,0	16	16	14	38,0
2503TR14108	10/8	G 1/4"	8	39,0	16	16	14	38,0
* 2503TR38128	12/8	G 3/8"	9	42,0	18	19	17	50,0
2503TR381210	12/10	G 3/8"	9	42,0	18	19	17	52,0

* Suitable for use with UCES coiled tubes on page 760

2505

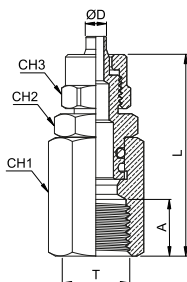
Female connector BSPP thread



CODE	ØD	T	A	L	CH1	CH2	g
2505TR18427	4/2,7	G 1/8"	8,0	21,3	14	8	11,0
2505TR1853	5/3	G 1/8"	8,0	22,5	14	8	12,0
2505TR1864	6/4	G 1/8"	8,0	25,0	14	12	18,0
2505TR1464		G 1/4"	11,0	29,0	17	12	26,0
2505TR3864	8/6	G 3/8"	11,5	29,5	20	12	30,0
2505TR1886		G 1/8"	8,0	25,0	14	14	20,0
2505TR1486		G 1/4"	11,0	29,0	17	14	28,0
2505TR3886		G 3/8"	11,5	29,5	20	14	32,0
2505TR1286	10/8	G 1/2"	14	33,0	24	14	32,0
2505TR18108		G 1/8"	8,0	26,5	14	16	24,0
2505TR14108		G 1/4"	11,0	30,5	17	16	32,0
2505TR38108		G 3/8"	11,5	31,0	20	16	36,0
2505TR12108	12/10	G 1/2"	14,0	34,5	24	16	50,0
2505TR381210		G 3/8"	11,5	32,5	20	18	40,0

2506

Swivel female connector BSPP thread



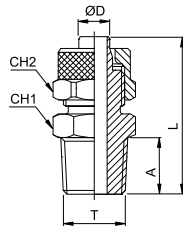
CODE	ØD	T	A	L	CH1	CH2	CH3	g
2506TR1464	6/4	G 1/4"	11,0	42,5	16	14	12	-
* 2506TR1485	8/5	G 1/4"	11,0	41,0	16	14	14	-
2506TR1486	8/6	G 1/4"	11,0	42,5	16	14	14	-
* 2506TR141065	10/6,5	G 1/4"	11,0	44,0	16	14	16	-
2506TR14108	10/8	G 1/4"	11,0	44,0	16	14	16	-

* Suitable for use with UCES coiled tubes on page 760



2510

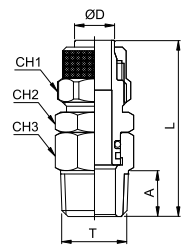
Male connector BSPT thread



CODE	ØD	T	A	L	CH1	CH2	g
2510TR18427	4/2,7	R 1/8"	8	23,8	12	8	10,0
2510TR1853	5/3	R 1/8"	8,0	25,0	12	8	10,0
2510TR1864	6/4	R 1/8"	8,0	27,5	12	12	16,0
2510TR1464		R 1/4"	11,0	31,0	14	12	20,0
2510TR3864		R 3/8"	11,5	31,5	17	12	26,0
2510TR1886	8/6	R 1/8"	8,0	27,5	12	14	18,0
2510TR1486		R 1/4"	11,0	31,0	14	14	22,0
2510TR3886		R 3/8"	11,5	31,5	17	14	28,0
2510TR1286		R 1/2"	14,0	34,5	22	14	44,0
2510TR18108	10/8	R 1/8"	8,0	29,5	14	16	24,0
2510TR14108		R 1/4"	11,0	32,5	14	16	28,0
2510TR38108		R 3/8"	11,5	33,0	17	16	34,0
2510TR12108		R 1/2"	14,0	36,0	22	16	46,0
2510TR381210	12/10	R 3/8"	11,5	34,5	17	18	38,0
2510TR121210		R 1/2"	14,0	37,5	22	18	50,0
2510TR1215125	15/12,5	R 1/2"	14,0	39,5	22	22	62,0

2511

Swivel male connector BSPT thread

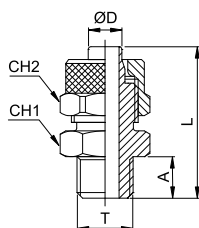


CODE	ØD	T	A	L	CH1	CH2	CH3	g
2511TR1864	6/4	G 1/8"	8	37,0	12	12	12	22,0
2511TR1464		G 1/4"	11	40,0	12	14	14	28,0
* 2511TR1885	8/5	G 1/8"	8	37,0	14	12	12	30,0
* 2511TR1485		G 1/4"	11	40,0	14	14	14	32,0
2511TR1886	8/6	G 1/8"	8	37,0	14	12	12	26,0
2511TR1486		G 1/4"	11	40,0	14	14	14	30,0
* 2511TR141065	10/6,5	G 1/4"	11	42,0	16	14	14	34,0
2511TR14108	10/8	G 1/4"	11	42,0	16	14	14	34,0
* 2511TR38128	12/8	G 3/8"	11,5	44,0	18	17	17	50,0
2511TR381210	12/10	G 3/8"	11,5	44,0	18	17	17	50,0

* Suitable for use with UCES coiled tubes on page 760

2512

Male connector metric thread

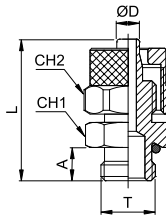


CODE	ØD	T	A	L	CH1	CH2	g
2512TRM553	5/3	M5	4	20,0	8	8	4,0
2512TRM653		M6	5	21,0	8	8	6,0
2512TRM564	6/4	M5	4	21,0	8	9	6,0
2512TRM664		M6	5	22,0	8	9	6,0
2512TRM1212564		M12x1,25	8	28,0	17	12	22,0
2512TRM121564	8/6	M12x1,5	8	28,0	17	12	22,0
2512TRM1212586		M12x1,25	8	28,0	17	14	24,0
2512TRM121586		M12x1,5	8	28,0	17	14	24,0



2513

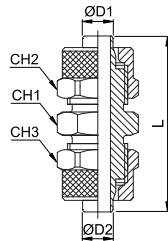
Male connector metric thread with o-ring



CODE	ØD	T	A	L	CH1	CH2	g
2513TRM5427	4/2,7	M5	4	20,0	8	8	6,0
2513TRM6427		M6	4	20,0	8	8	6,0
2513TRM553	5/3	M5	4	20,5	8	8	6,0
2513TRM653		M6	4	20,5	8	8	6,0
2513TRM564	6/4	M5	4	21,0	8	12	6,0
2513TRM664		M6	4	21,0	8	12	6,0
2513TRM12164		M12x1	8	28,0	15	12	20,0
2513TRM1212564	8/6	M12x1,25	8	28,0	15	12	20,0
2513TRM121564		M12x1,5	8	28,0	15	12	20,0
2513TRM1212586		M12x1,25	8	28,0	17	14	17,0
2513TRM121586	M12x1,5	8	28,0	17	14	17,0	

2515

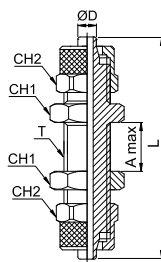
Union connector



CODE	ØD1	ØD2	L	CH1	CH2	CH3	g
2515TR427	4/2,7	4/2,7	26,0	8	8	8	8,0
2515TR53	5/3	5/3	28,5	8	8	8	8,0
2515TR64	6/4	6/4	34,5	12	12	12	22,0
2515TR86	8/6	8/6	35,0	14	14	14	28,0
2515TR8664		6/4	35,0	14	14	12	26,0
2515TR108	10/8	10/8	38,0	14	16	16	36,0
2515TR1210	12/10	12/10	41,0	17	18	18	48,0
2515TR15125	15/12,5	15/12,5	45,5	22	22	22	78,0

2520

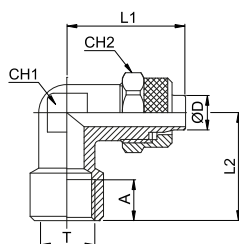
Bulkhead connector



CODE	ØD	T	A MAX	L	CH1	CH2	g
2520TR427	4/2,7	M6x0,5	8,5	36,7	9	8	10,0
2520TR53	5/3	M7x0,75	8,5	40,0	9	8	12,0
2520TR64	6/4	M10x1	10,5	48,0	14	12	34,0
2520TR86	8/6	M12x1	10,5	48,0	16	14	42,0
2520TR108	10/8	M14x1	8,5	50,0	17	16	54,0
2520TR1210	12/10	M16x1	8,5	53,0	19	18	76,0
2520TR15125	15/12,5	M20x1	8,5	58,0	24	22	110,0

2530

Female elbow BSPP thread

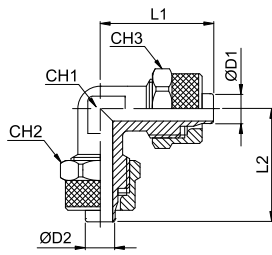


CODE	ØD	T	A	L1	L2	CH1	CH2	g
2530TR1853	5/3	G 1/8"	8,0	21,5	19,0	10	8	16,0
2530TR1864	6/4	G 1/8"	8,0	22,7	19,0	10	12	22,0
2530TR1464		G 1/4"	10,5	24,5	23,0	11	12	36,0
2530TR1886	8/6	G 1/8"	8,0	22,7	19,0	10	14	22,0
2530TR1486		G 1/4"	10,5	25,0	23,0	11	14	32,0
2530TR14108	10/8	G 1/4"	11,0	26,0	23,5	13	16	38,0
2530TR381210	12/10	G 3/8"	11,5	30,5	28,0	17	18	60,0



2535

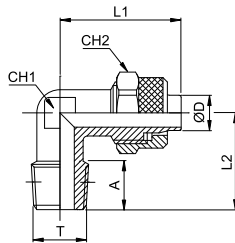
Union elbow connector



CODE	ØD1	ØD2	L1	L2	CH1	CH2	CH3	g
2535TR427	4/2,7	4/2,7	20,3	20,3	8	8	8	11,0
2535TR53	5/3	5/3	21,5	21,5	8	8	8	12,0
2535TR64	6/4	6/4	21,5	21,5	8	12	12	20,0
2535TR86	8/6	8/6	22,5	22,5	10	14	14	28,0
2535TR8664		6/4	22,5	22,5	10	14	12	26,0
2535TR108	10/8	10/8	25,5	25,5	11	16	16	38,0
2535TR1210	12/10	12/10	30,0	30,0	14	18	18	56,0
2535TR15125	15/12,5	15/12,5	34,0	34,0	17	22	22	88,0

2540

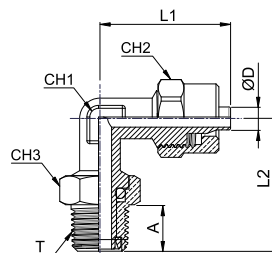
Male elbow BSPT thread



CODE	ØD	T	A	L1	L2	CH1	CH2	g
2540TR18427	4/2,7	R 1/8"	8,0	19,5	17,0	8	8	10,0
2540TR1853	5/3	R 1/8"	8,0	21,5	17,0	8	8	10,0
2540TR1864	6/4	R 1/8"	8,0	22,5	17,0	8	12	16,0
2540TR1464		R 1/4"	11,0	22,5	20,0	10	12	22,0
2540TR3864		R 3/8"	11,5	23,5	22,5	11	12	30,0
2540TR1886	8/6	R 1/8"	8,0	22,5	17,0	10	14	20,0
2540TR1486		R 1/4"	11,0	22,5	20,0	10	14	24,0
2540TR3886		R 3/8"	11,5	24,0	22,5	11	14	32,0
2540TR1286		R 1/2"	14	26,5	28,0	17	14	37,0
2540TR18108	10/8	R 1/8"	8,0	25,5	18,5	11	16	28,0
2540TR14108		R 1/4"	11,0	25,5	21,5	11	16	32,0
2540TR38108		R 3/8"	11,5	25,5	22,5	11	16	34,0
2540TR12108		R 1/2"	14,0	28,0	28,0	17	16	56,0
2540TR141210	12/10	R 1/4"	11,0	30,0	24,0	14	18	42,0
2540TR381210		R 3/8"	11,5	30,0	24,5	14	18	48,0
2540TR121210		R 1/2"	14,0	30,5	28,0	17	18	60,0
2540TR1215125	15/12,5	R 1/2"	14,0	34,0	28,0	17	22	70,0

2541

Swivel male elbow BSPT thread

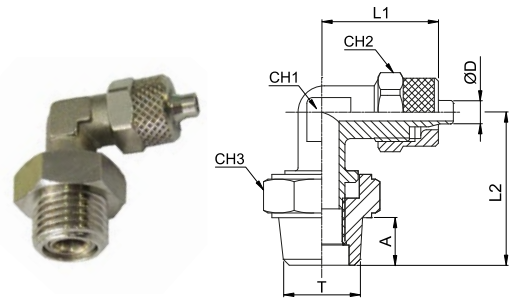


CODE	ØD	T	A	L1	L2	CH1	CH2	CH3	g
2541TR18427	4/2,7	R 1/8"	8	20,5	23,0	8	12	12	18,0
2541TR1864	6/4	R 1/8"	8	22,5	23,0	8	12	12	22,0
2541TR1464		R 1/4"	11	23,0	26,0	10	12	16	34,0
2541TR1886	8/6	R 1/8"	8	23,0	22,0	10	14	12	28,0
2541TR1486		R 1/4"	11	23,0	26,0	10	14	16	36,0
2541TR14108	10/8	R 1/4"	11	25,5	27,0	11	16	16	42,0



2542

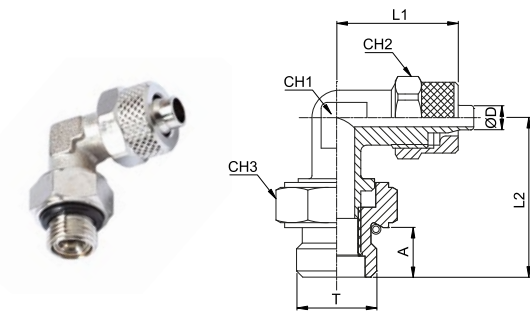
Swivel male elbow BSPP thread



CODE	ØD	T	A	L1	L2	CH1	CH2	CH3	g
2542TR18427	4/2,7	G 1/8"	6	20,5	23,0	8	12	14	18,0
2542TR1864	6/4	G 1/8"	6	22,5	23,0	8	12	14	22,0
2542TR1464		G 1/4"	8	23,0	25,0	10	12	17	34,0
2542TR1886	8/6	G 1/8"	6	23,0	22,0	10	14	14	28,0
2542TR1486		G 1/4"	8	23,0	25,0	10	14	17	36,0
2542TR14108	10/8	G 1/4"	8	25,5	26,0	11	16	17	42,0

2543

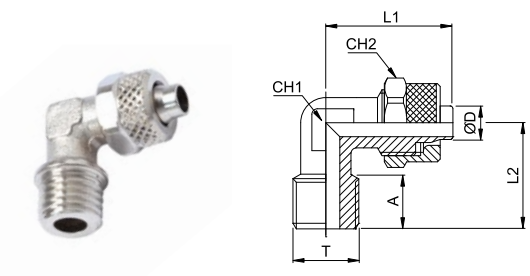
Swivel male elbow BSPP thread with o-ring



CODE	ØD	T	A	L1	L2	CH1	CH2	CH3	g
2543TR18427	4/2,7	G 1/8"	6	20,5	23,0	8	12	14	19,0
2543TR1864	6/4	G 1/8"	6	22,5	23,0	8	12	14	23,0
2543TR1464		G 1/4"	8	23,0	25,0	10	12	17	35,0
2543TR1886	8/6	G 1/8"	6	23,0	22,0	10	14	14	29,0
2543TR1486		G 1/4"	8	23,0	25,0	10	14	17	37,0
2543TR14108	10/8	G 1/4"	8	25,5	26,0	11	14	17	43,0

2548

Male elbow metric thread

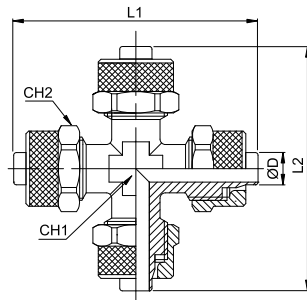


CODE	ØD	T	A	L1	L2	CH1	CH2	g
2548TRM5427	4/2,7	M5	4	19,5	15,0	8	8	10,0
2548TRM6427		M6	4	19,5	15,0	8	8	10,0
2548TRM553	5/3	M5	4	21,5	15,0	8	8	10,0
2548TRM564	6/4	M5	4	22,5	15,0	8	9	14,0
2548TRM1212564		M12x1,25	9	22,5	20,5	10	12	24,0
2548TRM121564		M12x1,5	9	22,5	20,5	10	12	22,0
2548TRM1212586	8/6	M12x1,25	9	22,5	20,5	10	14	24,0
2548TRM121586		M12x1,5	9	22,5	20,5	10	14	24,0



2550

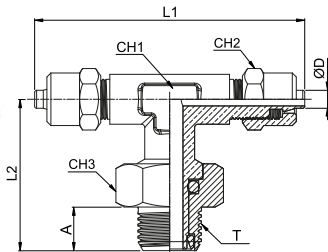
Cross junction connector



CODE	ØD	L1	L2	CH1	CH2	g
2550TR53	5/3	43,0	43,0	8	8	22,0
2550TR64	6/4	45,0	45,0	8	12	42,0
2550TR86	8/6	45,0	45,0	10	14	52,0
2550TR108	10/8	51,0	51,0	11	16	70,0

2552

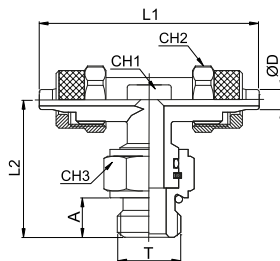
Swivel male tee BSPP thread



CODE	ØD	T	A	L1	L2	CH1	CH2	CH3	g
2552TR18427	4/2,7	G 1/8"	6	40,5	23,0	8	8	13	19,0
2552TR1864	6/4	G 1/8"	6	45,0	23,0	8	12	13	23,0
2552TR1464		G 1/4"	8	45,5	26,0	10	12	17	35,0
2552TR1886	8/6	G 1/8"	6	45,5	23,0	10	14	13	29,0
2552TR1486		G 1/4"	8	45,5	26,0	10	14	17	37,0
2552TR14108	10/8	G 1/4"	8	51,0	27,0	11	16	17	43,0

2553

Swivel male tee BSPP thread with o-ring

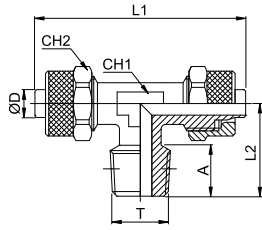


CODE	ØD	T	A	L1	L2	CH1	CH2	CH3	g
2553TR18427	4/2,7	G 1/8"	6	40,5	23,0	8	8	13	19,0
2553TR1864	6/4	G 1/8"	6	45,0	23,0	8	12	13	23,0
2553TR1464		G 1/4"	8	45,5	26,0	10	12	17	35,0
2553TR1886	8/6	G 1/8"	6	45,5	23,0	10	14	13	29,0
2553TR1486		G 1/4"	8	45,5	26,0	10	14	17	37,0
2553TR14108	10/8	G 1/4"	8	51,0	27,0	11	16	17	43,0



2555

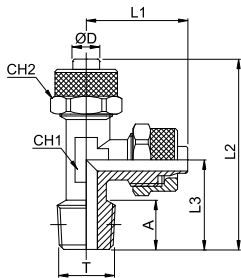
Male tee BSPT thread



CODE	ØD	T	A	L1	L2	CH1	CH2	g
2555TR18427	4/2,7	R 1/8"	8	40,6	17,0	8	8	16,0
2555TRM553	5/3	M5	4	43,0	15,0	8	8	16,0
2555TR1853		R 1/8"	8	43,0	17,0	8	8	16,0
2555TR1864	6/4	R 1/8"	8	45,0	17,0	8	12	26,0
2555TR1464		R 1/4"	11	45,5	20,5	10	12	34,0
2555TR3864	8/6	R 3/8"	11,5	48,0	22,5	11	12	42,0
2555TR1886		R 1/8"	8	45,5	17,5	10	14	34,0
2555TR1486	10/8	R 1/4"	11	45,5	20,5	10	14	36,0
2555TR3886		R 3/8"	11,5	48,0	22,5	11	14	44,0
2555TR18108	12/10	R 1/8"	8	51,0	18,5	11	16	44,0
2555TR14108		R 1/4"	11	51,0	21,5	11	16	48,0
2555TR38108		R 3/8"	11,5	51,0	22,5	11	16	50,0
2555TR12108	15/12,5	R 1/2"	14	57,0	28,0	17	16	80,0
2555TR381210		R 3/8"	11,5	60,0	24,5	14	18	70,0
2555TR121210	15/12,5	R 1/2"	14	61,0	28,0	17	18	86,0
2555TR1215125		R 1/2"	14	68,0	28,0	17	22	108,0

2560

Lateral male tee BSPT thread

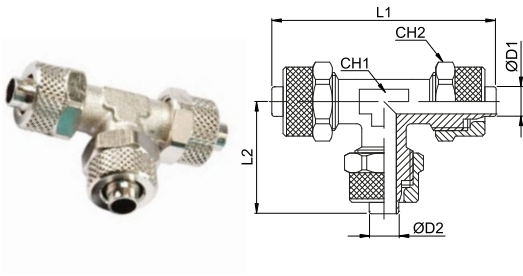


CODE	ØD	T	A	L1	L2	L3	CH1	CH2	g
2560TR18427	4/2,7	R 1/8"	8	21,5	38,0	17,0	8	8	16,0
2560TRM553	5/3	M5	4	21,5	36,5	15,0	8	8	16,0
2560TR1853		R 1/8"	8	21,5	38,5	17,0	8	8	16,0
2560TR1864	6/4	R 1/8"	8	22,5	39,5	17,0	8	12	26,0
2560TR1464		R 1/4"	11	22,7	43,5	20,7	10	12	34,0
2560TR3864	8/6	R 3/8"	11,5	24,0	46,5	22,5	11	12	42,0
2560TR1886		R 1/8"	8	22,7	40,5	17,7	10	14	34,0
2560TR1486	10/8	R 1/4"	11	22,7	43,5	20,7	10	14	36,0
2560TR3886		R 3/8"	11,5	24,0	46,5	22,5	11	14	44,0
2560TR18108	12/10	R 1/8"	8	25,5	44,0	18,5	11	16	44,0
2560TR14108		R 1/4"	11	25,5	46,5	21,0	11	16	48,0
2560TR38108		R 3/8"	11,5	25,5	48,0	22,5	11	16	50,0
2560TR12108	15/12,5	R 1/2"	14	28,5	56,5	28,0	17	16	80,0
2560TR381210		R 3/8"	11,5	30,0	54,5	24,5	14	18	70,0
2560TR121210	15/12,5	R 1/2"	14	30,5	58,5	28,0	17	18	86,0
2560TR1215125		R 1/2"	14	34,0	62,0	28,0	17	22	108,0



2565

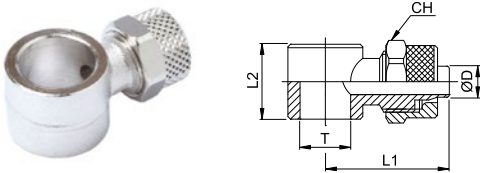
Union tee connector



CODE	ØD1	ØD2	L1	L2	CH1	CH2	g
2565TR427	4/2,7	4/2,7	40,6	20,3	8	8	16,0
2565TR53	5/3	5/3	43,0	21,5	8	8	16,0
2565TR64	6/4	6/4	45,0	22,5	8	12	32,0
2565TR86	8/6	8/6	45,0	22,5	10	14	42,0
2565TR8664		6/4	45,0	22,5	10	14	40,0
2565TR108	10/8	10/8	51,0	25,5	11	16	56,0
2565TR1210	12/10	12/10	60,0	30,0	14	18	78,0
2565TR15125	15/12,5	15/12,5	68,0	34,0	17	22	124,0

2570

Single banjo body

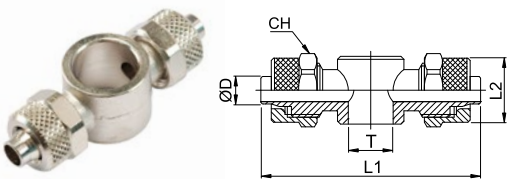


For use with 251V & 252V banjo stem

CODE	ØD	T	L1	L2	CH	g
2570TRM5427	4/2,7	M5	15,8	9,0	8	6,0
2570TRM6427		M6	15,8	9,0	8	6,0
2570TR18427		G 1/8"	21,3	14,5	8	15,0
2570TRM553	5/3	M5	17,0	9,0	8	8,0
2570TR1853		G 1/8"	22,5	14,5	8	14,0
2570TRM564	6/4	M5	18,0	9,0	9	8,0
2570TR1864		G 1/8"	24,0	14,5	12	20,0
2570TR1464		G 1/4"	26,0	14,5	12	24,0
2570TR1886	8/6	G 1/8"	24,0	14,5	14	22,0
2570TR1486		G 1/4"	26,0	14,5	14	26,0
2570TR14108		G 1/4"	27,5	14,5	16	30,0

2575

Double banjo body

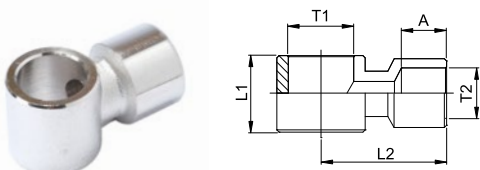


For use with 251V & 252V banjo stem

CODE	ØD	T	L1	L2	CH	g
2575TR18427	4/2,7	G 1/8"	42,6	14,5	8	19,0
2575TR1853	5/3	G 1/8"	45,0	14,5	8	20,0
2575TR1864	6/4	G 1/8"	48,0	14,5	12	30,0
2575TR1464		G 1/4"	52,0	14,5	12	34,0
2575TR1886	8/6	G 1/8"	48,0	14,5	14	32,0
2575TR1486		G 1/4"	52,0	14,5	14	38,0
2575TR14108	10/8	G 1/4"	55,0	14,5	16	44,0

2580

Female single banjo body BSPP thread



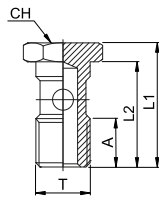
For use with 251V & 252V banjo stem

CODE	T1	T2	A	L1	L2	g
2580TR18	G 1/8"	G 1/8"	8,0	14,5	20,0	22,0
2580TR14	G 1/4"	G 1/4"	10,0	17,5	25,0	41,0
2580TR38	G 3/8"	G 3/8"	11,5	21,0	28,0	78,0



251V

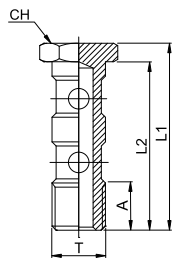
Single banjo stem



CODE	T	A	L1	L2	CH	g
251VM5	M5	6	18,0	14,5	8	4,0
251VM6	M6	6	18,0	14,5	8	5,0
251V18	G 1/8"	8	27,0	23,0	14	14,0
251V14	G 1/4"	11	29,5	25,0	17	24,0

252V

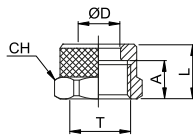
Double banjo stem



CODE	T	A	L1	L2	CH	g
252V18	G 1/8"	8	43,0	39,0	14	18,0
252V14	G 1/4"	11	45,5	41,0	17	34,0

2630

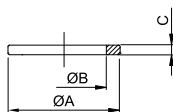
Locking nut



CODE	ØD	T	A	L	CH	g
2630TRM605427	4/2,7	M6x0,5	6,0	8,1	8	1,50
2630TRM707553	5/3	M7x0,75	6,0	8,5	8	1,34
2630TRM807564	6/4	M8x0,75	6,5	9,0	9	1,51
2630TRM10164		M10x1	7,5	10,5	12	4,64
2630TRM12186	8/6	M12x1	7,5	10,5	14	5,57
2630TRM141108	10/8	M14x1	8,0	11,5	16	7,09
2630TRM1611210	12/10	M16x1	10,0	13,0	18	9,36
2630TRM20115125	15/12,5	M20x1	11,0	15,5	22	15,04

2610

Nylon notched washer

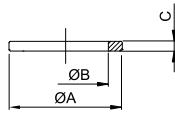


CODE	T	ØA	ØB	C	g
2610TRM5	M5	8,0	5,2	1,0	2,0
2610TR18	G 1/8"	14,0	10,0	1,5	26,0
2610TR14	G 1/4"	18,0	13,5	1,5	42,0
2610TR38	G 3/8"	21,0	16,8	2,0	28,0
2610TR12	G 1/2"	26,0	21,1	2,0	38,0



2612

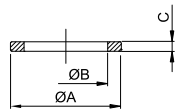
PVC washer



CODE	T	ØA	ØB	C	g
2612TR18	G 1/8"	14,0	10,0	1,5	18,0
2612TR14	G 1/4"	17,5	13,5	1,5	18,0
2612TR38	G 3/8"	21,0	16,7	1,5	18,0
2612TR12	G 1/2"	26,0	21,3	1,5	18,0

2615

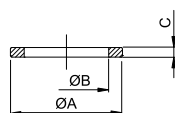
Nylon washer



CODE	T	ØA	ØB	C	g
2615TRM5	M5	8,5	5,0	1,5	4,0
2615TR18	G 1/8"	14,0	9,8	1,5	24,0
2615TR14	G 1/4"	18,0	13,2	1,5	40,0
2615TR38	G 3/8"	21,0	16,7	1,5	20,0
2615TR12	G 1/2"	26,0	21,1	2,0	38,0
2615TR34	G 3/4"	32,0	26,7	2,5	62,0

2620

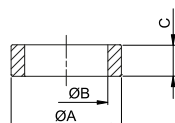
Aluminium washer



CODE	T	ØA	ØB	C	g
2620TR18	G 1/8"	14,0	10,0	1,5	58,0
2620TR14	G 1/4"	17,3	13,3	1,5	76,0
2620TR38	G 3/8"	21,0	16,9	1,5	46,0
2620TR12	G 1/2"	26,0	21,1	1,5	70,0

2625

Nylon spacer



CODE	T	ØA	ØB	C	g
2625TR18	1/8"	14,0	10,0	5,0	52,0
2625TR14	1/4"	17,5	13,2	5,0	66,0

For use with 251V & 252V banjo stem

