

-10°C ÷ 95°C



Working pressure:  
0-12 Bar (suggested)  
35 Bar (max)



Compressed air



- Taper gas BSPT ISO 7  
from R1/4" to R1/2"  
- Parallel gas BSPP ISO 228  
G3/8" and G1/2"

**REGULATION**

ISO 6150 B15

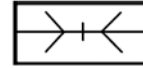
**NOMINAL DIAMETER**

8 mm

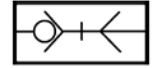
**FLOWRATE**

1500 l/min

**CONFIGURATIONS**



PL  
Free  
Passage



SO  
Single  
Shutter



Products in compliance with  
EC Regulation 1907/2006



Products in compliance with  
the directive EU 2015/863

COMPONENTS	FLUID-20N
Body	Nickel-plated steel
Slide	Nickel-plated steel
Adapter	Nickel-plated brass
Valve	Nickel-plated brass
Spring	Stainless steel AISI 302
Ball	Chromed steel
Retaining ring	Stainless steel AISI 302
Seal	NBR

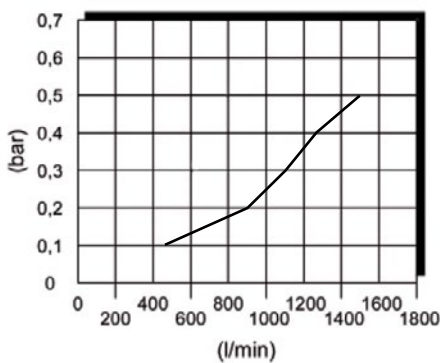
  

CONNECTION	NE-20
Body	Nickel-plated steel

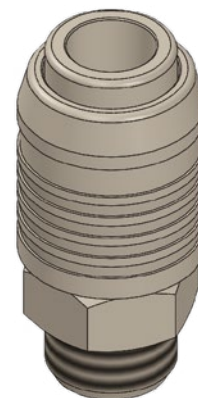


**FLOW CHART**

Chart created considering a working pressure of 6 Bar with a pressure drop of 0.5 Bar and simple shut-off.

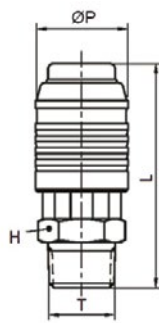


**VIEW - QUICK COUPLING FLUID-20N-M**



**FLUID-20N-M**

Male quick coupling BSPT thread

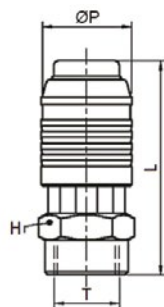


CODE	T	ØP	L	H
FLUID-20N-M3/8	R 3/8"	27,6	59,5	21
FLUID-20N-M3/8-PL	R 3/8"	27,6	59,5	21
FLUID-20N-M1/2	R 1/2"	27,6	63,0	22
FLUID-20N-M1/2-PL	R 1/2"	27,6	63,0	22

-PL: Free Passage

**FLUID-20N-H**

Female quick coupling BSPP thread

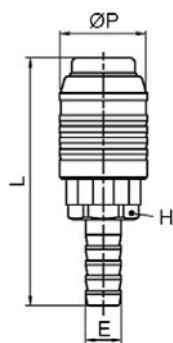


CODE	T	ØP	L	H
FLUID-20N-H3/8	G 3/8"	27,6	59,0	22
FLUID-20N-H3/8-PL	G 3/8"	27,6	59,0	22
FLUID-20N-H1/2	G 1/2"	27,6	59,0	25
FLUID-20N-H1/2-PL	G 1/2"	27,6	59,0	25

-PL: Free Passage

**FLUID-20N-E**

Quick coupling with barb connector



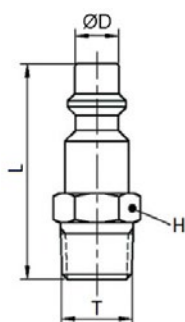
CODE	E	ØP	L	H
FLUID-20N-E10	11,2	27,6	73,0	21
FLUID-20N-E10-PL	11,2	27,6	73,0	21
FLUID-20N-E12	13,2	27,6	75,0	21
FLUID-20N-E12-PL	13,2	27,6	75,0	21

-PL: Free Passage



**NE-20M**

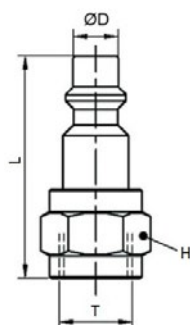
Male connection BSPT thread



CODE	T	ØD	L	H
NE-20M-1/4	R 1/4"	10,8	44,1	17
NE-20M	R 3/8"	10,8	45,1	17
NE-20M-1/2	R 1/2"	10,8	48,1	22

**NE-20H**

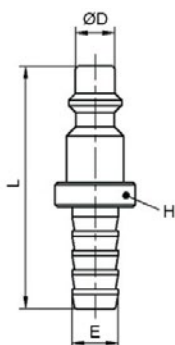
Female connection BSPP thread



CODE	T	ØD	L	H
NE-20H	G 3/8"	10,8	42,6	22
NE-20H-1/2	G 1/2"	10,8	47,6	27

**NE-20E**

Connection with barb connector



CODE	E	ØD	L	H
NE-20E	11,2	10,8	54,1	20
NE-20E-13	13,8	10,8	59,1	20

