

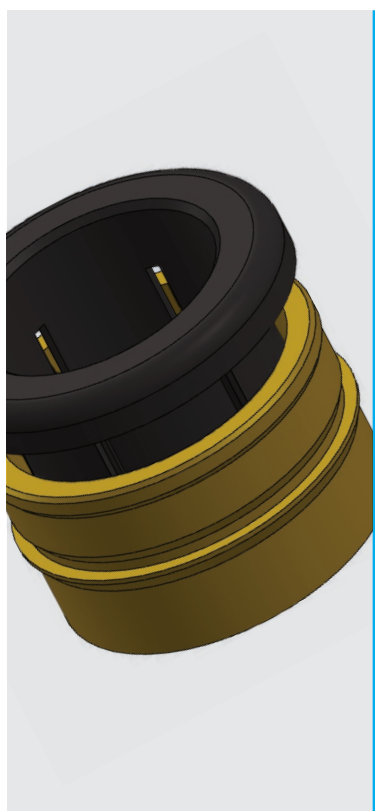
CARTRIDGES FLUIDFIT

PLUS

SAVING IN ASSEMBLING TIME
THANKS TO THE DEDICATED SLOT

IMMEDIATE CONNECTION TO THE TUBE

FULL PASSAGE



Dry air: $-20^{\circ}\text{C} \div 98^{\circ}\text{C}$
Air & fluids: $1^{\circ}\text{C} \div 98^{\circ}\text{C}$



Working pressure:
20 Bar
Negative pressure:
-750 mmHg



Water, beverages, vacuum
compressed air, gases
& liquids suitable with
construction materials



Polyamide, Polyurethane,
Polyethylene, PTFE, FEP



Body: brass
POM for HCAS-P
Collet/Lock claw: POM
Seal: EPDM



Products in compliance with
the directive 2002/95/EC

RoHS2

Products in compliance with
the directive 2011/65/EU

