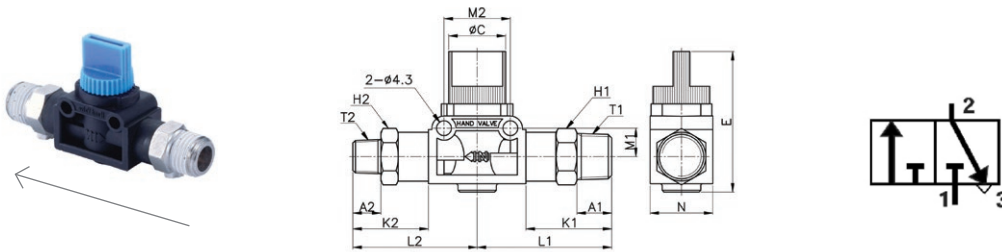


## HVM-R

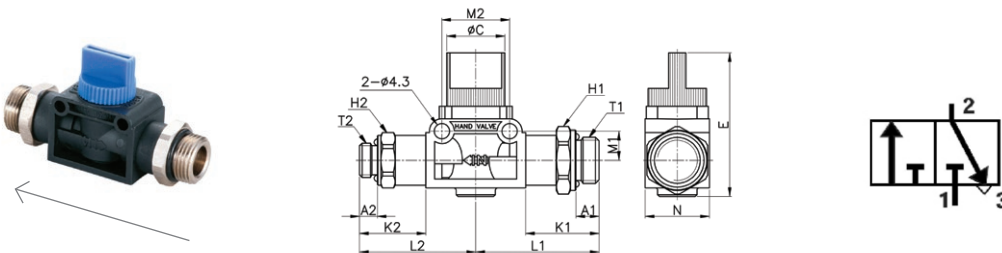
Male hand valve BSPT thread



CODE	T1	T2	H1	H2	ØC	N	E	A1	A2	K1	K2	L1	L2	M1	M2	GR.
HVM01R01	R1/8"	R1/8"	14	14	16,3	18,0	40,3	8,0	8,0	21,6	21,6	35,6	35,6	8,2	19,0	47
HVM02R01	R1/4"	R1/8"	14	14	16,3	18,0	40,3	10,0	8,0	24,6	21,6	38,6	35,6	8,2	19,0	49
HVM02R02	R1/4"	R1/4"	14	14	16,3	18,0	40,3	10,0	10,0	24,6	24,6	38,6	38,6	8,2	19,0	50
HVM03R02	R3/8"	R1/4"	17	17	19,3	21,2	40,5	11,0	10,0	24,0	24,6	40,5	38,6	10,9	24,0	64
HVM03R03	R3/8"	R3/8"	17	17	19,3	21,2	40,5	11,0	11,0	24,0	24,0	40,5	40,5	10,9	24,0	83
HVM04R03	R1/2"	R3/8"	21	19	19,3	21,2	40,5	14,0	11,0	28,6	24,0	45,1	40,5	10,9	24,0	103
HVM04R04	R1/2"	R1/2"	21	21	19,3	21,2	40,5	14,0	14,0	28,6	28,6	45,1	45,1	10,9	24,0	121

## HVM-G

Male hand valve BSPP thread



CODE	T1	T2	H1	H2	ØC	N	E	A1	A2	K1	K2	L1	L2	M1	M2	GR.
HVM01G01	G1/8"	G1/8"	14,0	14,0	16,3	18,0	40,3	5,0	5,0	18,6	18,6	32,6	32,6	8,2	19,0	47,0
HVM02G01	G1/4"	G1/8"	17,0	14,0	16,3	18,0	40,3	6,5	5,0	20,6	18,6	34,6	32,6	8,2	19,0	49,0
HVM02G02	G1/4"	G1/4"	17,0	17,0	16,3	18,0	40,3	6,5	6,5	20,6	20,6	34,6	34,6	8,2	19,0	50,0
HVM03G02	G3/8"	G1/4"	20,0	17,0	19,3	21,2	40,5	6,5	6,5	18,5	20,6	35,0	34,6	10,9	24,0	64,0
HVM03G03	G3/8"	G3/8"	20,0	20,0	19,3	21,2	40,5	6,5	6,5	18,5	18,5	35,0	35,0	10,9	24,0	83,0
HVM04G03	G1/2"	G3/8"	24,0	20,0	19,3	21,2	40,5	8,0	6,5	21,6	18,5	38,1	35,0	10,9	24,0	103,0
HVM04G04	G1/2"	G1/2"	24,0	24,0	19,3	21,2	40,5	8,0	8,0	21,6	21,6	38,1	38,1	10,9	24,0	121,0

