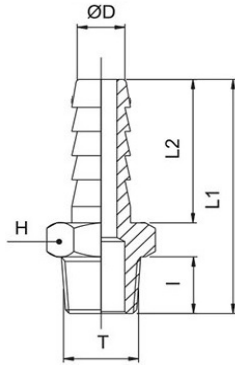


1169

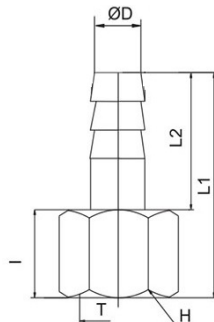
Male barb connector BSPT thread



CODE	T	ØD	I	L1	L2	H	GR.
1169TR186	R1/8"	6	8,0	31,5	19,0	12	8,0
1169TR146	R1/4"	6	11,0	35,0	19,0	14	14,0
1169TR187	R1/8"	7	8,0	31,5	19,0	12	10,0
1169TR147	R1/4"	7	11,0	35,0	19,0	14	14,0
1169TR188	R1/8"	8	8,0	31,5	19,0	12	10,0
1169TR148	R1/4"	8	11,0	35,0	19,0	14	14,0
1169TR189	R1/8"	9	8,0	31,5	19,0	12	12,0
1169TR149	R1/4"	9	11,0	35,0	19,0	14	16,0
1169TR389	R3/8"	9	11,5	35,5	19,0	17	20,0
1169TR129	R1/2"	9	14,0	38,5	19,0	22	32,0
1169TR1810	R1/8"	10	8,0	32,5	20,0	12	10,0
1169TR1410	R1/4"	10	11,0	36,0	20,0	14	16,0
1169TR3810	R3/8"	10	11,5	36,5	20,0	17	22,0
1169TR1210	R1/2"	10	14,0	39,5	20,0	22	32,0
1169TR1412	R1/4"	12	11,0	36,0	20,0	14	16,0
1169TR3812	R3/8"	12	11,5	36,5	20,0	17	22,0
1169TR1212	R1/2"	12	14,0	39,5	20,0	22	34,0
1169TR3814	R3/8"	14	11,5	38,5	22,0	17	24,0
1169TR1214	R1/2"	14	14,0	41,5	22,0	22	36,0
1169TR3816	R3/8"	16	11,5	38,5	22,0	17	26,0
1169TR1216	R1/2"	16	14,0	41,5	22,0	22	36,0
1169TR3416	R3/4"	16	16,5	45,0	22,0	27	58,0
1169TR3817	R3/8"	17	11,5	40,5	24,0	18	30,0
1169TR1217	R1/2"	17	14,0	43,5	24,0	22	40,0
1169TR3818	R3/8"	18	11,5	40,5	24,0	19	34,0
1169TR1218	R1/2"	18	14,0	43,5	24,0	22	44,0
1169TR3418	R3/4"	18	16,5	47,0	24,0	27	62,0
1169TR3820	R3/8"	20	11,5	41,0	24,0	22	40,0
1169TR1220	R1/2"	20	14,0	43,5	24,0	22	42,0
1169TR3420	R3/4"	20	16,5	46,5	24,0	27	60,0
1169TR3425	R3/4"	25	16,5	53,0	30,0	27	76,0
1169TR125	R1"	25	19,0	56,0	30,0	34	114,0

1170

Female barb connector BSPP thread



CODE	T	ØD	I	L1	L2	H	GR.
1170TR187	G1/8"	7	10,0	27,0	17,0	12	9,0
1170TR147	G1/4"	7	13,0	33,0	20,0	17	21,0
1170TR188	G1/8"	8	10,0	27,0	17,0	12	8,0
1170TR148	G1/4"	8	13,0	33,0	20,0	17	19,0
1170TR189	G1/8"	9	10,0	27,0	17,0	12	9,0
1170TR149	G1/4"	9	13,0	33,0	20,0	17	20,0
1170TR1412	G1/4"	12	13,0	33,0	20,0	17	22,0

